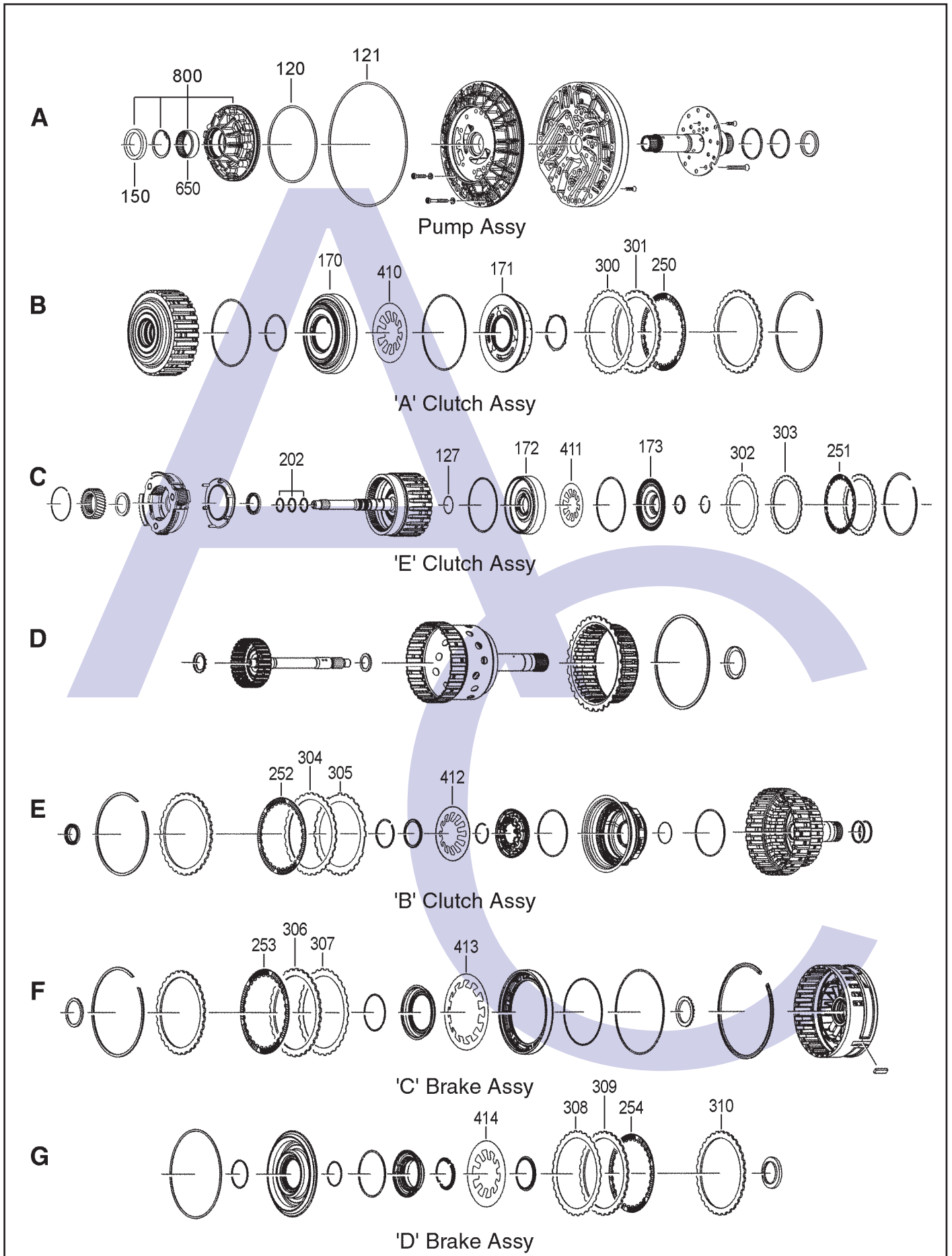


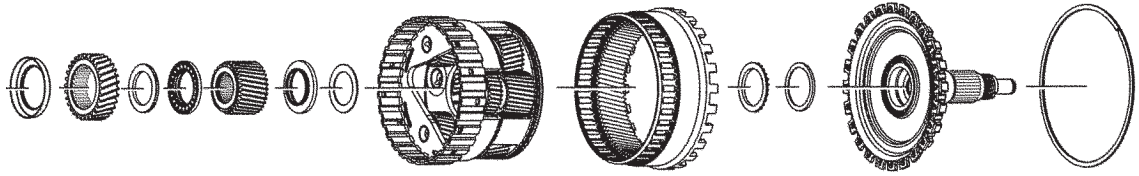
# ZF 6HP26 1068 010 xxx & ZF 6HP26X 1068 020 xxx 6 SPEED RWD (Full Electronic Control)



# ZF 6HP26 1068 010 xxx & ZF 6HP26X 1068 020 xxx

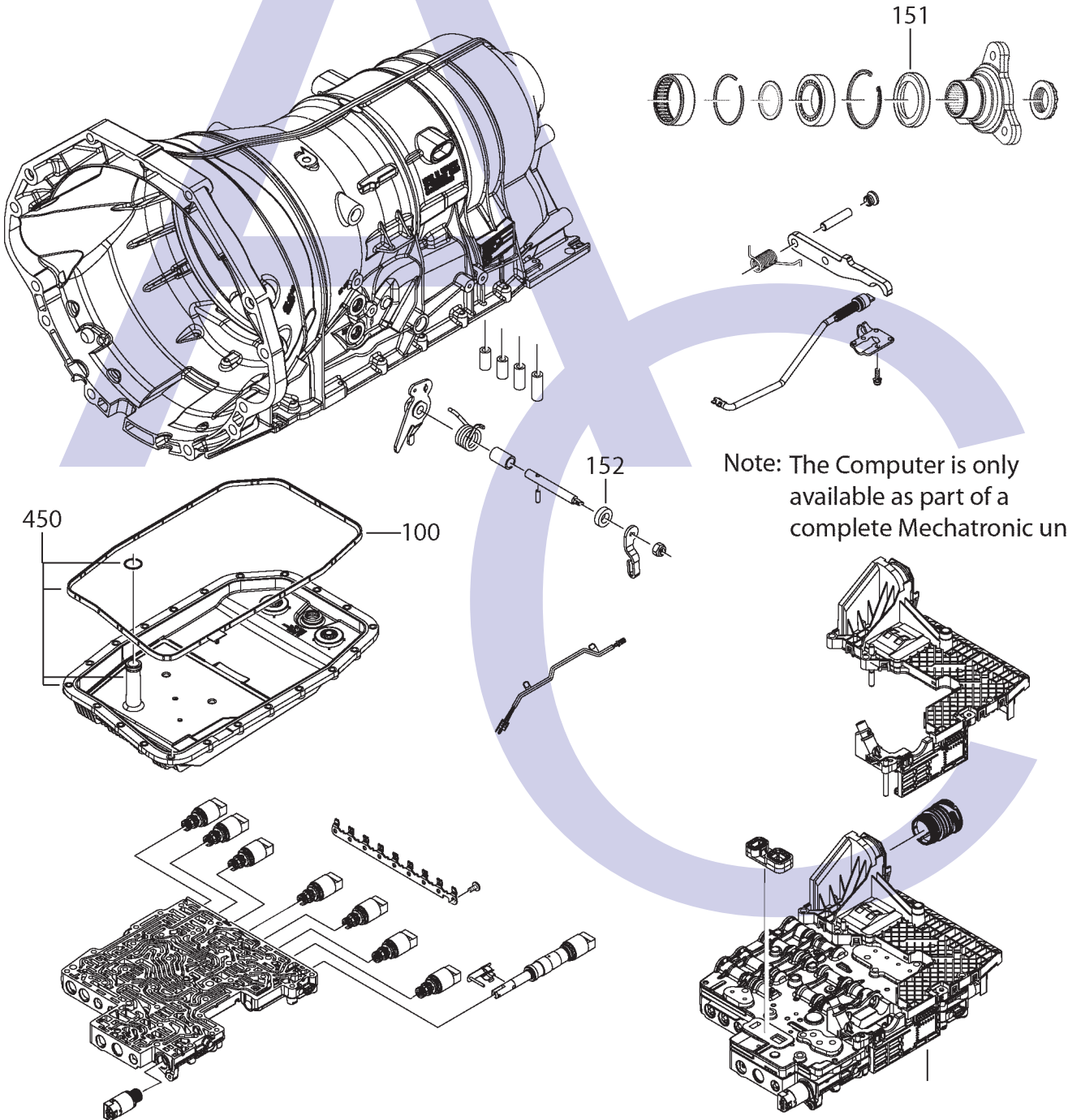
## 6 SPEED RWD (Full Electronic Control)

H



Rear Planetary Assembly

J



Note: The Computer is only available as part of a complete Mechatronic unit

# ZF 6HP26 1068 010 xxx & ZF 6HP26X 1068 020 xxx

## 6 SPEED RWD (Full Electronic Control)

ILL NO.	DESCRIPTION	YEARS	QTY	PART NO
<b>KITS</b>				
Kit	Overhaul Kit.....	All	1	<b>6HP26.OHK01</b>
<b>GASKETS</b>				
100J	Oil Pan 6HP26 (Except Codes <b>1068 010</b> 082)	All	1	<b>6HP26.GAS01</b>
00J	Oil Pan 6HP26X (Except Codes <b>1068 020</b> 011, 018)	All	1	<b>6HP26.GAS01</b>
<b>RUBBER COMPONENTS</b>				
120A	'O' Ring, Pump to Stator.....	All	1	<b>4HP24.OR01</b>
121A	'O' Ring, Stator to Case.....	All	1	<b>5HP18.OR02</b>
127C	'O' Ring, 'E' Clutch Piston (Inner).....	All	1	<b>5HP24.OR03</b>
<b>METAL CLAD SEALS</b>				
150A	Front Pump.....	All	1	<b>6HP26.MCS01</b>
151H	Extension Housing 6HP26.....	All	1	<b>6HP26.MCS02</b>
151H	Extension Housing 6HP26X (Fits Code <b>1068 020</b> 033 Only). All	All	1	<b>6HP26.MCS02</b>
152J	Selector Shaft Seal (10mm x 18mm x 5mm).....	All	1	<b>3HP22.MCS03</b>
<b>MOULDED PISTONS</b>				
170B	'A' Clutch (6HP26) (Fits Codes <b>1068 010</b> 014, 015, 030, 032, 033, 034, 035, 036, 038, 039, 043, 045, 046, 048, 050, 057, 059, 060, 061, 063, 065, 066, 070, 073).....	All	1	<b>6HP26.PIS01</b>
170B	'A' Clutch (6HP26) (Fits Codes <b>1068 010</b> 051, 052, 067, 074, 075, 077, 079, 081, 084, 085, 086, 087, 088, 091, 093, 097, 098, 100, 102, 103, 104, 105, 175).....	All	1	<b>6HP26.PIS03</b>
170B	'A' Clutch (6HP26X) (Fits Codes <b>1068 020</b> 002, 003, 005, 018, 019, 020, 021).....	All	1	<b>6HP26.PIS03</b>
171B	'A' Clutch Damper Piston (6HP26) (Fits Codes <b>1068 010</b> 014, 015, 026, 029, 030, 031, 032, 033, 034, 035, 036, 037038, 039, 040, 043, 044, 045, 046, 048, 050, 057, 059, 060, 061, 063, 064, 065, 066, 070, 071, 073).....	All	1	<b>6HP26.PIS02</b>
171B	'A' Clutch Damper Piston (6HP26) (Fits Codes <b>1068 010</b> 051, 052, 053, 067, 069, 074, 075, 076, 077, 078, 079, 081, 083, 084, 085, 086, 087, 088, 090, 091, 092, 093, 094, 095, 096, 097, 098, 100, 101, 102, 103, 104, 105, 175).....	All	1	<b>6HP26.PIS04</b>
171B	'A' Clutch Damper Piston (6HP26X) (Fits Codes <b>1068 020</b> 002, 003, 004, 005, 011, 018, 019, 020, 021, 026, 033).....	All	1	<b>6HP26.PIS04</b>
172C	'E' Clutch (6HP26) (Fits Codes <b>1068 010</b> 030, 032, 033, 036, 038, 039, 043, 045, 046, 063, 065, 066, 070, 073, 075, 077, 079, 081, 085, 086, 100, 102, 103, 104, 105).....	All	1	<b>6HP26.PIS05</b>
172C	'E' Clutch (6HP26X) (Fits Codes <b>1068 020</b> 002, 003, 005, 019, 020, 021).....	All	1	<b>6HP26.PIS05</b>
173C	'E' Clutch Damper Piston.....	All	1	<b>6HP26.PIS06</b>

ILL NO.	DESCRIPTION	YEARS	QTY	PART NO
<b>SEALING RINGS</b>				
202C	Input Shaft ('E' Clutch).....	All	3	<b>5HP19SSR03</b>
<b>FRICTION PLATES</b>				
250B	'A' Clutch.....	All	4-5	<b>6HP26.FRP01</b>
251C	'E' Clutch.....	All	5-7	<b>6HP26.FRP02</b>
251C	'E' Clutch (Ford Falcon Code <b>1068 010</b> 175)	All	6	<b>6HP26.FRP06</b>
252E	'B' Clutch.....	All	4-5	<b>6HP26.FRP03</b>
253F	'C' Brake.....	All	4-5	<b>6HP26.FRP03</b>
254G	'D' Brake.....	All	6-7	<b>6HP26.FRP01</b>
<b>STEEL PLATES</b>				
300B	Waved Steel 'A' Clutch (6HP26) (Fits Codes <b>1068 010</b> 047, 051, 052, 053, 054, 067, 069, 074, 075, 076, 077, 078, 079, 081, 082, 083, 084, 085, 086, 087, 088, 089, 090, 091, 092, 093, 094, 095, 096, 097, 098, 100, 101, 102, 103, 104, 105, 106, 175)	All	1	<b>6HP26.STP11</b>
300B	Waved Steel 'A' Clutch (6HP26) (Fits Codes <b>1068 010</b> 014, 015, 026, 027, 028, 029, 030, 031, 032, 033, 034, 035, 036, 037, 038, 039, 040, 043, 044, 045, 046, 048, 050, 057, 059, 060, 061, 063, 064, 065, 066, 070, 071, 073)	All	1	<b>6HP26.STP06</b>
300B	Waved Steel 'A' Clutch (6HP26X) .....	All	1	<b>6HP26.STP11</b>
301B	'A' Clutch Steel (3.00mm).....	All	4-5	<b>6HP26.STP01</b>
302C	Waved Steel 'E' Clutch (6HP26) (Fits Codes <b>1068 010</b> 014, 015, 026, 027, 029, 030, 031, 032, 033, 034, 035, 036, 037, 038, 039, 040, 043, 044, 045, 046, 047, 048, 050, 051, 052, 053, 057, 059, 060, 061, 063, 064, 065, 066, 067, 069, 070, 071, 073, 075, 076, 077, 078, 079, 081, 084, 085, 086, 087, 088, 090, 091, 094, 095, 096, 097, 098, 100, 101, 102, 103, 104, 105)	All	1	<b>6HP26.STP07</b>
302C	Waved Steel 'E' Clutch (6HP26X) .....	All	1	<b>6HP26.STP07</b>
303C	'E' Clutch Steel (2.40mm).....	All	6-7	<b>6HP26.STP02</b>
304E	'B' Clutch Steel (2.10mm).....	All	4-5	<b>6HP26.STP03</b>
305E	Wavy Steel 'B' Clutch (6HP26) (Fits Codes <b>1068 010</b> 014, 015, 026, 027, 028, 029, 030, 031, 032, 033, 034, 035, 036, 037, 038, 039, 040, 043, 044, 045, 046, 048, 050, 057, 059, 060, 061, 062, 063, 064, 065, 066, 070, 071, 073)	All	1	<b>6HP26.STP08</b>
305E	Wavy Steel 'B' Clutch (6HP26) (Fits Codes <b>1068 010</b> 047, 051, 052, 053, 054, 067, 069, 074, 075, 076, 077, 078, 079, 081, 082, 083, 084, 085, 086, 087, 088, 089, 090, 091, 092, 093, 094, 095, 096, 097, 098, 100, 101, 102, 103, 104, 105, 106, 175)	All	1	<b>6HP26.STP11</b>
305E	Waved Steel 'B' Clutch (6HP26X) .....	All	1	<b>6HP26.STP11</b>
306F	'C' Brake Steel (3.00mm).....	All	4-5	<b>6HP26.STP01</b>
307F	Waved Steel 'C' Brake.....	All	1	<b>6HP26.STP08</b>
308G	Waved Steel 'D' Brake (6HP26) (Fits Codes <b>1068 010</b> 047, 051, 052, 053, 054, 067, 069, 074, 075, 076, 077, 078, 079, 081, 082, 083, 084, 085, 086, 087, 088, 089, 090, 091, 092, 093, 094, 095, 096, 097, 098, 100, 101, 102, 103, 104, 105, 106, 175)	All	1	<b>6HP26.STP11</b>

# ZF 6HP26 1068 010 xxx & ZF 6HP26X 1068 020 xxx

## 6 SPEED RWD (Full Electronic Control)

ILL NO.	DESCRIPTION	YEARS	QTY	PART NO
<b>STEEL PLATES Cont...</b>				
308G	Waved Steel 'D' Brake (6HP26) (Fits Codes <b>1068 010</b> 014, 015, 026, 027, 028, 029, 030, 031, 032, 033, 034, 035, 036, 037, 038, 039, 040, 043, 044, 045, 046, 048, 050, 057, 059, 060, 061, 062, 063, 064, 065, 066, 070, 071, 073)	All	1	<b>6HP26.STP06</b>
308G	Waved Steel 'D' Brake (6HP26X)	All	1	<b>6HP26.STP11</b>
309G	'D' Brake Steel (2.10mm)	All	6-7	<b>6HP26.STP03</b>
310G	End Steel 'D' Brake (Selective) (2.10mm Thick)	All	1	<b>6HP26.STP03</b>
	(3.00mm Thick)	All	1	<b>6HP26.STP01</b>
<b>PRESSURE PLATES</b>				
<b>SPRINGS &amp; CIRCLIPS</b>				
410B	Diaphragm 'A' Clutch	All	1	<b>6HP26.DIA01</b>
411C	Diaphragm 'E' Clutch	All	1	<b>6HP26.DIA02</b>
412E	Diaphragm 'B' Clutch	All	1	<b>6HP26.DIA03</b>
413F	Diaphragm 'C' Brake	All	1	<b>6HP26.DIA05</b>
414G	Diaphragm 'D' Brake	All	1	<b>6HP26.DIA04</b>
<b>FILTERS</b>				
450J	Filter Kit, Incudes Oil Pan & Gasket 6HP26 (Except Code <b>1068 010</b> 082)	All	1	<b>6HP26.PAN01</b>
450J	Filter Kit,, (Transtec) Incudes Oil Pan & Gasket 6HP26 (Except Code <b>1068 010</b> 082)	All	1	<b>6HP26.PAN11</b>
450J	Filter Kit Incudes Oil Pan & Gasket 6HP26 (Code <b>1068 010</b> 082)	All	1	<b>6HP26.PAN01</b>
450J	Filter Kit, Incudes Oil Pan & Gasket 6HP26X (Fits Codes <b>1068 020</b> 002, 003, 004, 005, 006, 019, 020, 021, 026, 033)	All	1	<b>6HP26.PAN01</b>
450J	Filter Kit, Incudes Oil Pan & Gasket 6HP26X (Fits Codes <b>1068 020</b> 011, 018)	All	1	<b>6HP26.FIL02</b>
<b>BUSHINGS</b>				

ILL NO.	DESCRIPTION	YEARS	QTY	PART NO
<b>THRUST WASHERS &amp; BEARINGS</b>				
650A	Needle Bearing (Front Pump)	All	1	<b>6HP26.BE01</b>
<b>ELECTRICAL COMPONENTS</b>				
<b>VALVE BODY PARTS</b>				
750J	Valve Body Assy (Mechatronic)	All	1	<b>6HP26.VB01</b>
<b>HARD PARTS</b>				
800A	Short Pump Assy 6HP26	All	1	<b>6HP26.PUM01</b>
800A	Short Pump Assy 6HP26X	All	1	<b>6HP26.PUM01</b>
<b>SPECIAL ITEMS</b>				
<b>TOOLS &amp; MANUALS</b>				
NI	Repair Manual (OEM On CD)...	All		<b>6HP26.MAN01</b>